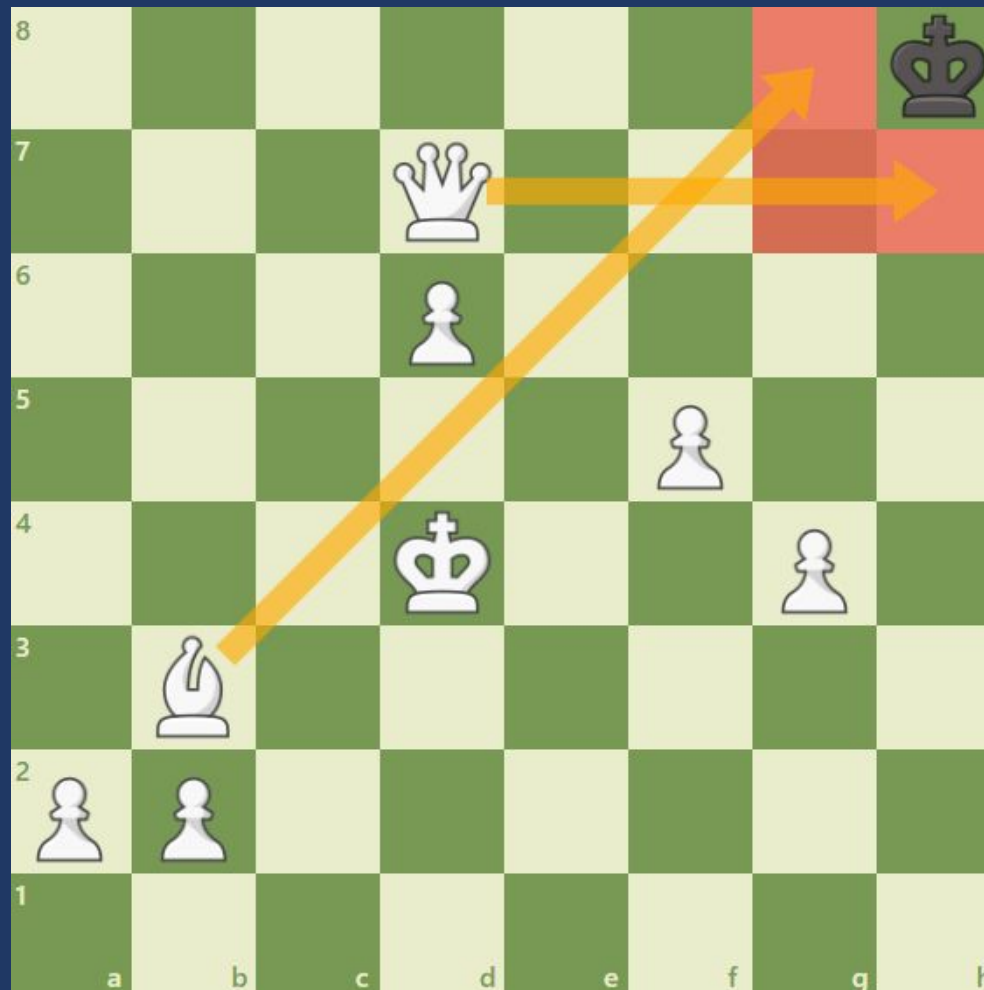


A yellow speech bubble with a tail pointing towards the bottom-left corner, set against a dark blue background.

**Word of the Week**

## Word of the Week



What do you think this week's word of the week is?

Word of the Week

# Stalemate

(noun)

Are you familiar with this word?

What does it mean?

Do you know how to pronounce this word?

Word of the Week

**Stalemate** (noun)

## Definition

A situation where no further progress is possible because the people involved can't agree or move.

## Word of the Week

# Stalemate (noun)

A situation where no further progress is possible because the people involved can't agree or move.

## Examples

“The chess match ended in a **stalemate** when one player had no legal moves that they could make.”

“We reached a **stalemate** when we couldn't agree on which movie to watch.”

“The peace talks reached a **stalemate** when neither side would agree on the border locations.”

Can you come up with your own?

## Word of the Week

# Stalemate (noun)

A situation where no further progress is possible because the people involved can't agree or move.

## Synonyms

Deadlock

Impasse

Standstill

Stand-off

Draw

## Antonyms

Advance

Progress

Headway

## Word of the Week

### Task

Add **stalemate** to your word of the week record sheet (page 18 of your planner).

Use this time to check you have all of the previous words recorded as well.

A situation where no f  
inv

St

Week	Word	
1	Inaugural	21
2	Extremophile	22
3	Sanctity	23
4	Placate	24
5	Heritage	25
6	Empowerment	26
7	Resilience	27
8	Empathy	28
9	Integrity	29
10	Elaborate	30
11	Ubiquitous	31
12	Anticipation	32
13	Lucrative	33
14	Resolution	34
15	Resolution	35
16	Camaraderie	36
17	Superfluous	37
18	Paradigm	38
19	<b>Stalemate</b>	39
20		

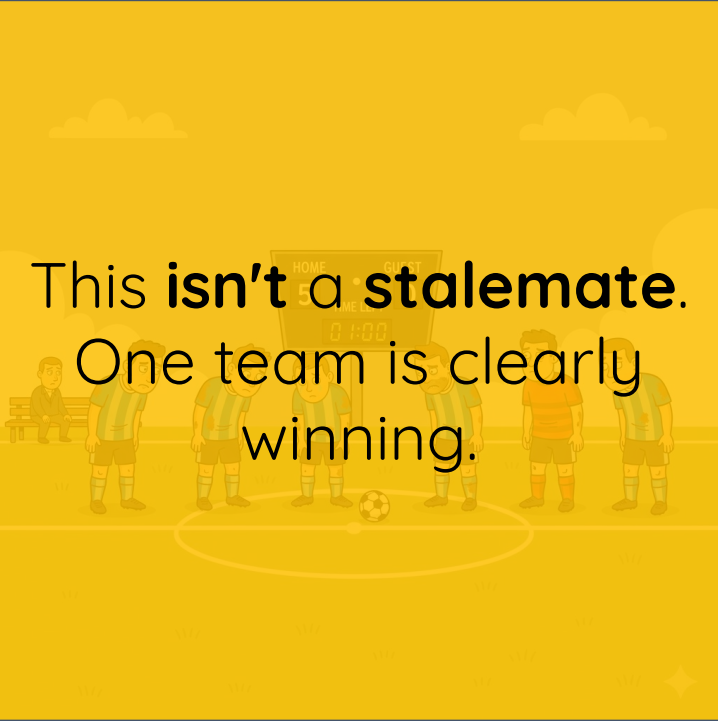
## Word of the Week

# Stalemate (noun)

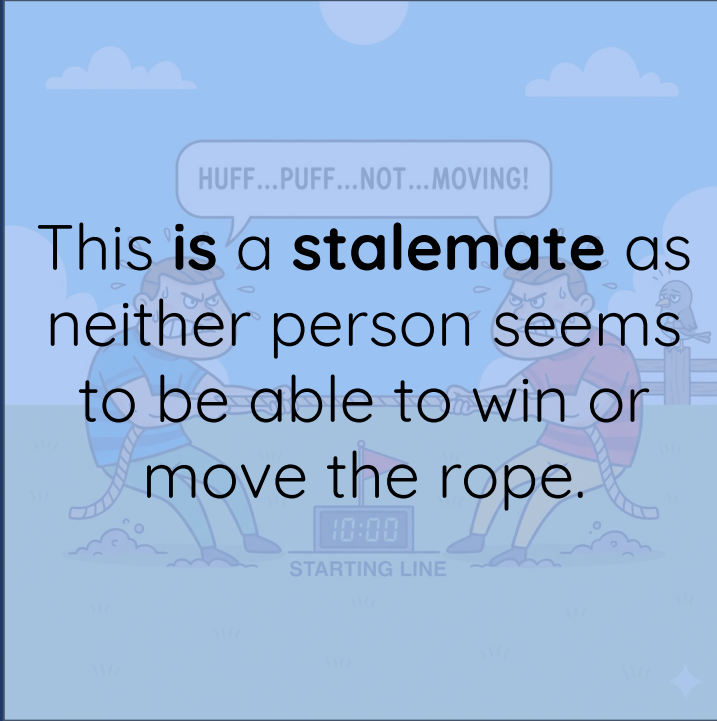
A situation where no further progress is possible because the people involved can't agree or move.

## Challenge:


Discuss each scenario shown with your partner. Is it a **stalemate** and can you explain your reasoning?



This **isn't** a **stalemate**.  
One team is clearly winning.



This **is** a **stalemate** as  
neither person seems  
to be able to win or  
move the rope.



This **is** a **stalemate** as  
the King isn't in check  
but it also can't make  
any moves.